



WE LIFT YOU ABOVE ALL

# ANTENNAS AND SECTORS REPLACEMENT PROJECT IN FLORIDA

[www.alphaplatforms.com](http://www.alphaplatforms.com)





**Our valued client and partner, a telecommunications infrastructure services provider that offers end-to-end solutions for telecom operators, has hired Alpha Platforms for another crucial and time-sensitive 5-sector cell tower upgrade project in Spring Hill, Florida.**

## THE CHALLENGE

The first challenge was to get to the site. The site presented difficult sandy terrain conditions through the forest with overhanging tree branches, which posed obstacles to getting to the site. Heavy cranes would struggle to navigate and risk getting stuck.

The second obstacle was Florida's famous high winds. Our team had to organize safe work around delicate equipment at 190 feet high with winds of up to 27 miles per hour. Normally, most cranes would call off their operations at 17 miles per hour.

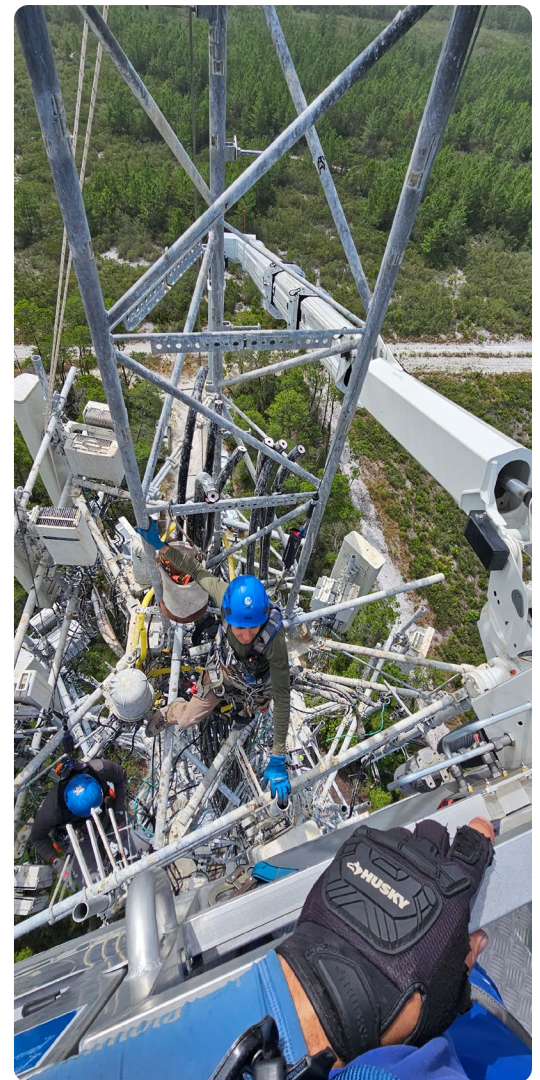
The third challenge was completing the project within just 5 days.

## THE SOLUTION

Alpha Platforms dispatched the **250-foot**-tall truck-mounted aerial platform equipped with a 60-ft upper boom. Its 12-foot-wide/1,320 lb loading capacity work basket allows you to easily lift a crew and equipment to hard-to-reach places: up, over, and around the cell tower, between, above, and under the antennas, providing 360-degree access around the tower.

Mounted on light but mighty 5-axle Kenworth chassis, the lift safely navigated through rough and sandy forest terrain to the job site with no delays. Upon arrival at the site, some of the sectors were nearly assembled and ready. The Alpha crew wasted no time and began work immediately. The operator of the Alpha Platforms set up and leveled the lift, ensuring that it was ready to transport the crew within 20 minutes of their arrival at the site.

Lift's work basket hoist and its **power lift system** were used to hoist removed outdated antennas and sectors and to lift new sectors and antennas to 190 feet to be mounted on a cell tower.



**To try the same world-class service and equipment, just call or email:**

[info@alphaplatforms.com](mailto:info@alphaplatforms.com)  
[www.alphaplatforms.com](http://www.alphaplatforms.com)

**855-2000-855**



## THE OUTCOME

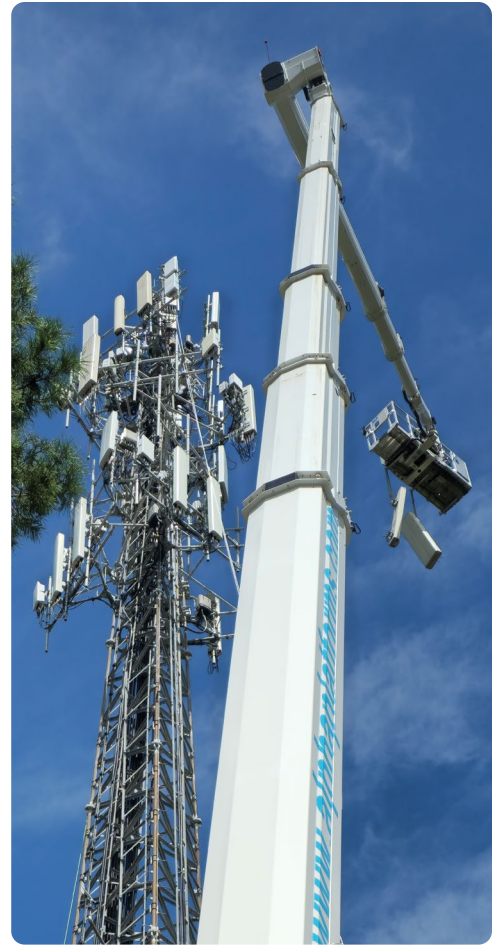
The project unfolded over several stages. Despite facing winds up to 27 miles per hour 18 outdated antennas and a few naked sectors were removed in just a day and a half.

Subsequently, two and a half days were dedicated to installing new sectors and 15 new antennas, using Alpha's work cage Power Lift System, and eliminating the need for an external crane. The work was carried out from several set-up positions to ensure maximum safety during lifting operations. As the client was committed to completing the project as scheduled, the Alpha crew continued working even after sunset until the job was done.

The fifth day was used for final adjustments, ensuring a seamlessly upgraded and fully operational cell tower. As a result, despite the persistent challenges, including challenging site access and high winds, Alpha Platforms with the client's team completed the project as scheduled within five days.

**This project exemplifies Alpha Platforms' dedication to overcoming challenges, prioritizing safety, and delivering efficient solutions for our valued clients.**

**Our precise German-made lifts and an all-inclusive operated rental service are the height access method of choice for hard-to-access structures or at extreme heights, as they combine unmatched productivity with safety and comfort.**



## TESTIMONIAL

*"Excellent service, arriving on time every day, responsible with the load limit, very attentive to the lubrication and controls of the crane."*

**Foreman**

telecom infrastructure  
services provider company



To try the same world-class service and equipment, just call or email:

info@alphaplatforms.com  
www.alphaplatforms.com

**855-2000-855**