



WE LIFT YOU ABOVE ALL

# CHICAGO BLITZ: FACADE INSPECTION & REPAIRS ON FOUR HOTELS IN TWO DAYS



[www.alphaplatforms.com](http://www.alphaplatforms.com)

One of our long-term clients, a national engineering company based in New York, routinely inspects Chicago buildings for adherence to the Exterior Wall Ordinance Municipal Code Ch. 14A-6.

## THE CHALLENGE

Chicago street work permits are expensive, charging businesses by the hour and footage of required road closure. And since permits are typically issued for short durations (1-2 days), businesses scramble to work as cost-efficiently as possible. As a result, many facade inspections are conducted from scaffolds to avoid high fees.

This project called for inspection of four hotel buildings, like the **Hampton Inn located in Majestic Theater**, a 1906 city landmark, featuring a lavishly decorated facade displaying major Broadway musicals.



These buildings are adorned with delicate stone carvings, protruding cornices, or overhanging roofs that could be damaged by hanging baskets, making access from above complicated. Additionally, hotel management were opposed to baskets dangling in front of guest room windows or scaffolding turning hotels into construction sites and inconveniencing their guests.

**The client sought a solution to eliminate hanging baskets and scaffolding while minimizing parking time and space required by the lift to facilitate all inspections and repairs of identified facade issues.**

To try the same world-class service and equipment, just call or email:

info@alphaplatforms.com  
www.alphaplatforms.com

**855-2000-855**

## THE SOLUTION

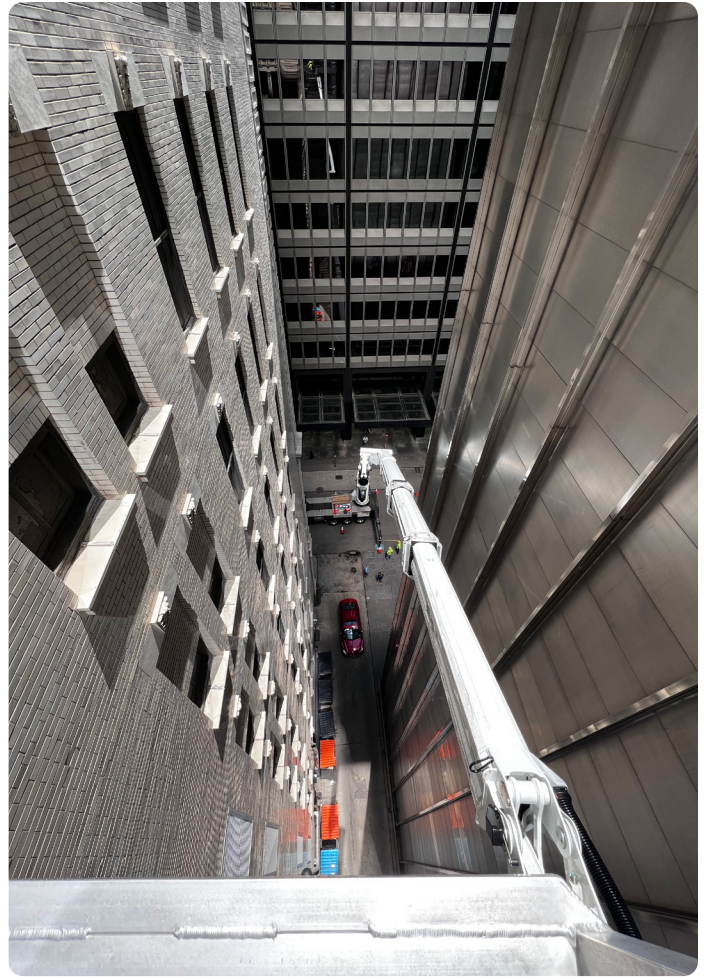
Our client engaged Alpha Platforms to inspect four hotels around the city within a remarkably short timeframe.

We dispatched the **A-250**, our second tallest 250-ft boom lift with an impressive side reach of 135 ft. **Our lifts require only 10-15 minutes for setup and can be moved away 15 minutes after the job is completed, minimizing parking time at each location.**

Two of the hotels had two street-facing sides, and one had three street-facing sides. Instead of relocating the lift to park on each side of the building, Alpha's experienced full-time IPAF-certified lift operator skillfully maneuvered the cage between the buildings, which were located as close as 10 ft apart. **The extensive side reach of the A-250 reduced the number of required parking spots, thereby decreasing street yardage and permit fees.**

Our 12-ft large man baskets can lift up to 1,322 lbs. The client took full advantage of this capacity by placing several contractors in the cage to collaborate with the inspector to immediately caulk and repair multiple facade issues that were easy to fix. The inspector immediately attested to each fix, so a second inspection follow-up was unnecessary.

**This step eliminated the need for additional height access, further reducing the cost of street permits.**



## THE OUTCOME

The client made an excellent decision by renting our mobile and versatile boom lift, minimizing the exorbitant Chicago street permit fees and presenting a favorable inspection budget that appealed to their clients.

**The inspection and repairs of minor facade issues on all four hotels were completed in just two days.**

**Our precise German-made lifts and an all-inclusive operated rental service are the height access method of choice for hard-to-access structures or at extreme heights, as they combine unmatched productivity with safety and comfort.**



To try the same world-class service and equipment, just call or email:

info@alphaplatforms.com  
www.alphaplatforms.com

**855-2000-855**